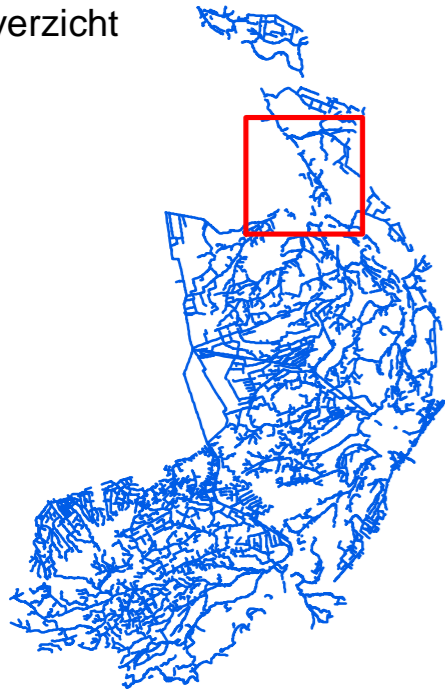



Overzicht





Legenda


 as_waterloop_20070524


Waterweegbree


Bedekking


 0 % (afwezig)


 0-5 %

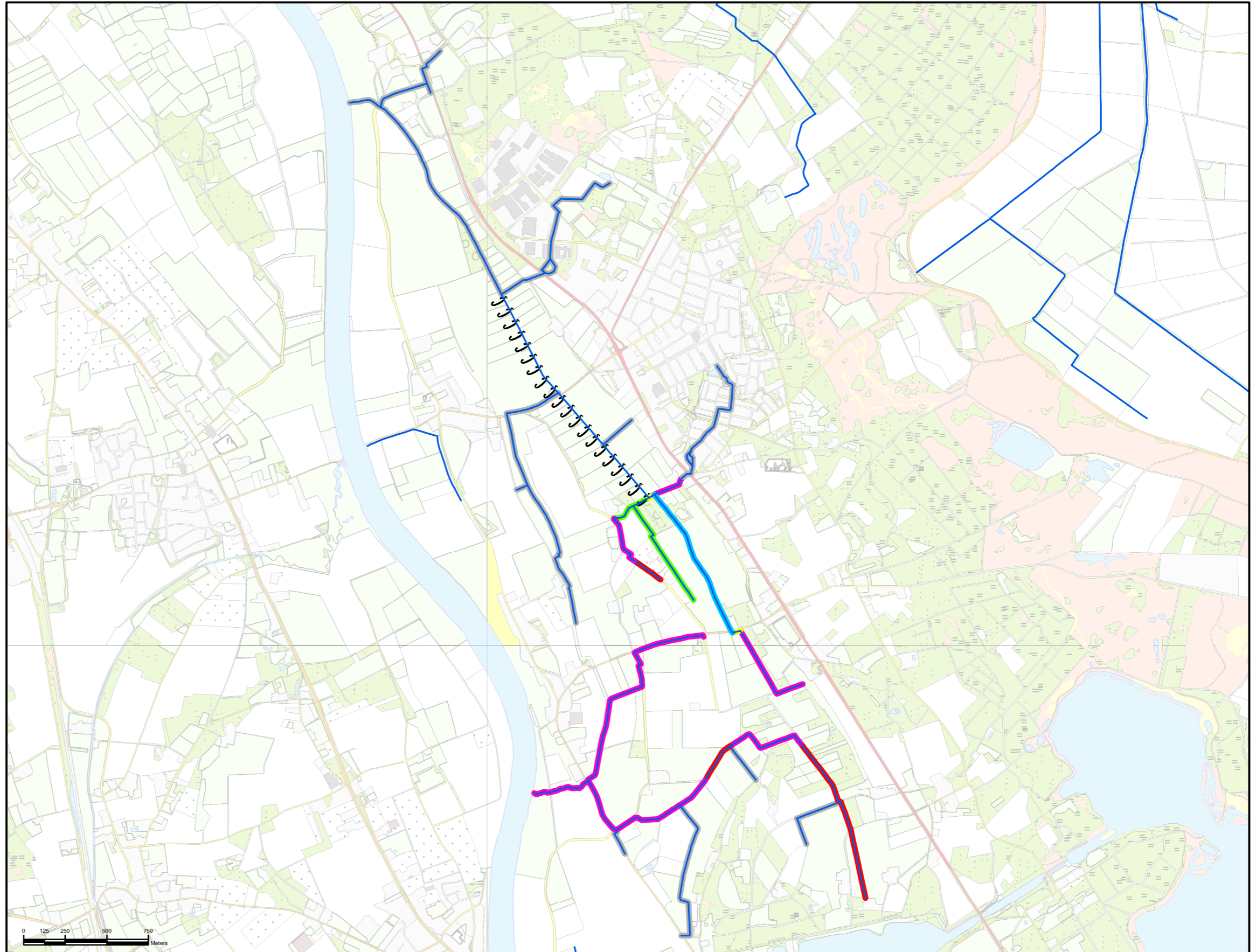
 5-20 %

 >20 %

 onbekend

 recent gemaaid

 waterloop droog



Rijksdriehoekstelsel

Centrale Meridiaan: 5°23'15.5"
Latitude of Origin: 52°09'22.178"
Schaal factor: 0.9999079
Offset x: 155000 m
Offset y: 463000 m

Bedekking Drijvende Waterweegbree

opname: 26 juni 2008

door: M. Boute

Datum: 15-11-2008 Schaal: 1:24,553 Get: DIKe